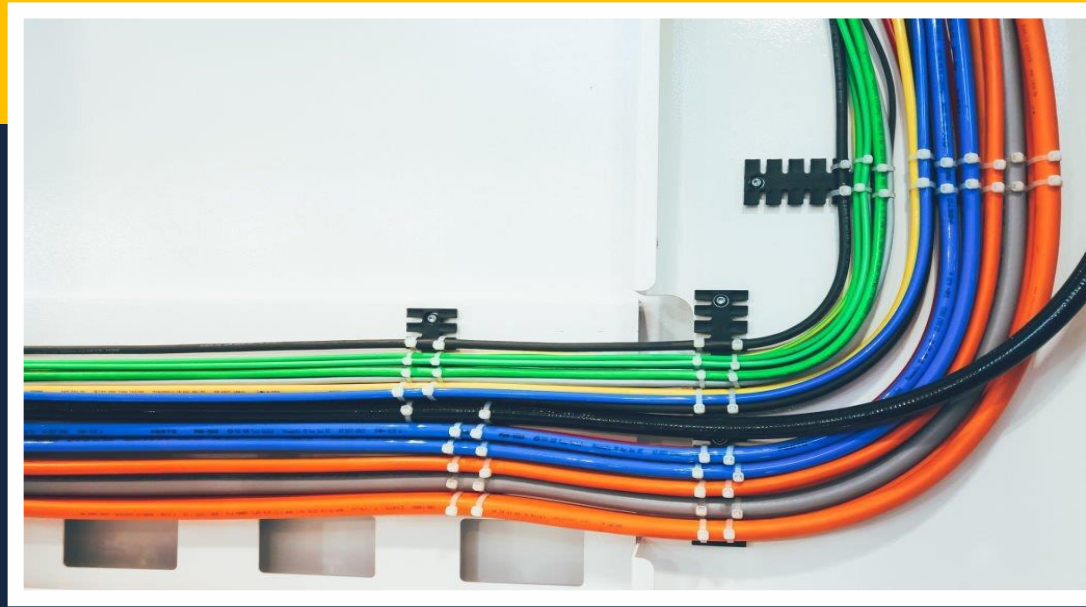
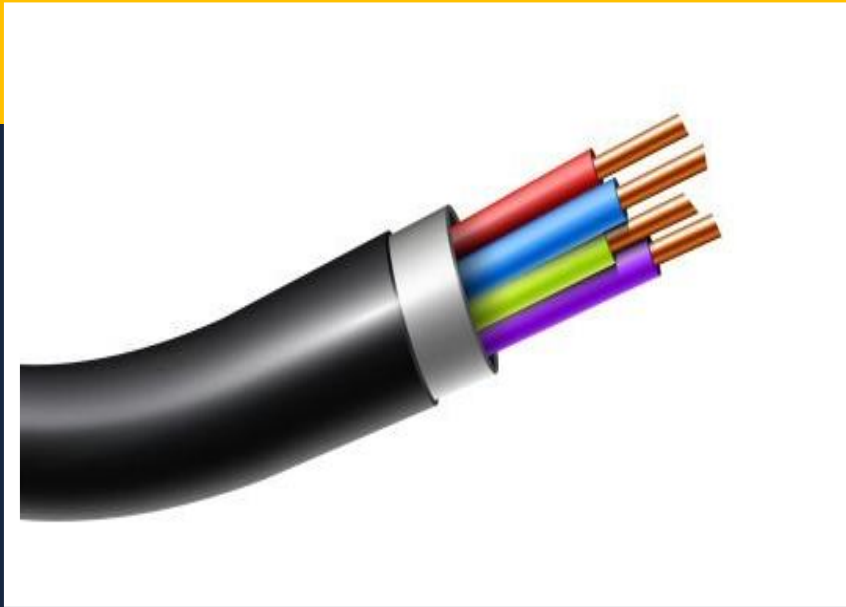


Know the basics -
**ELECTRICAL
SAFETY**



ELECTRICAL



ELECTRICAL HAZARDS



PREVENTION IS....



BE SAFE:

- **B**urns
- **E**lectrocution
- **S**hock
- **A**rc flash/arc blast
- **F**ire
- **E**xplosions

EXAMPLES OF FATAL ACCIDENTS



Case #1:

Worker electrocuted when the ladder met overhead power lines

Case #2:

Worker electrocuted when mast met high voltage overhead lines

Case #3:

Worker changing energized ballast on light fixture was electrocuted and fell to the concrete floor while working from an 8' fiberglass stepladder.

PICTURIZING RISK SCENARIOS

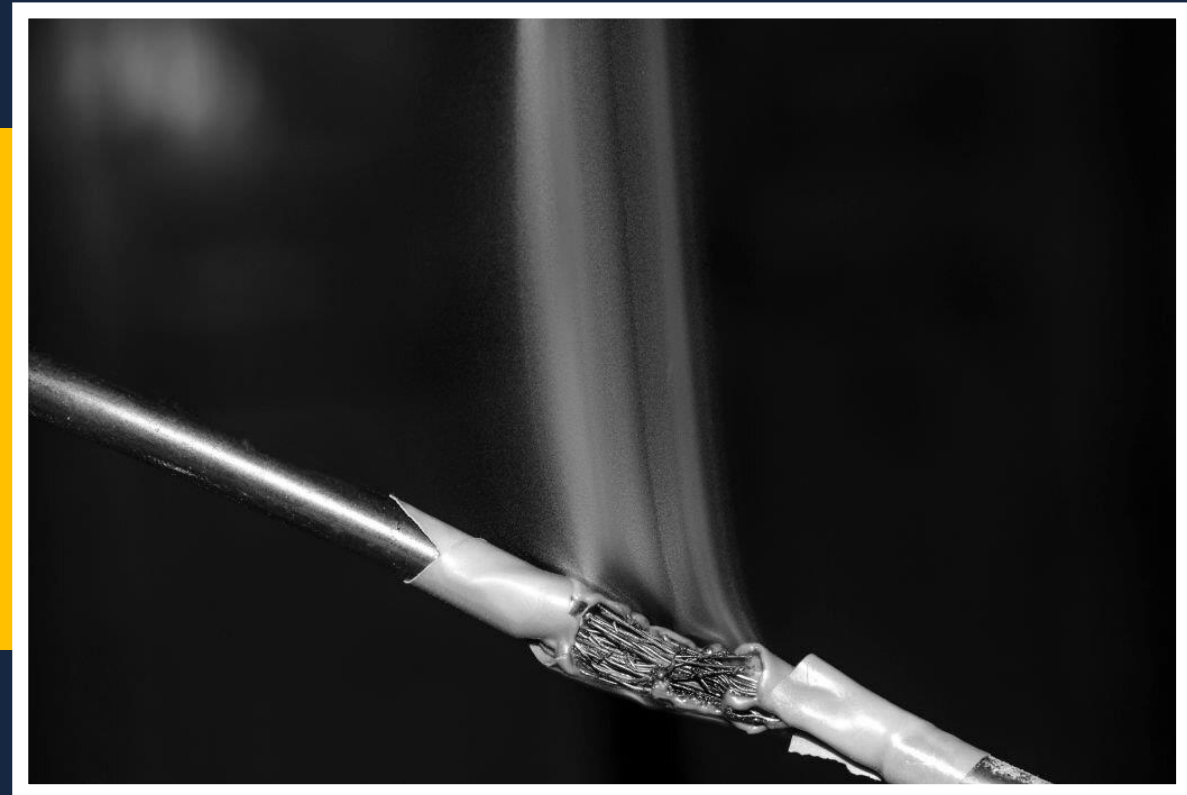
Contact with overhead power lines:

- Overhead and buried power lines carry extremely high voltage
- Risks
 - Electrocution (main risk)
 - Burns and falls



TYPES OF ELECTRICAL HAZARDS

Defective equipment or tools





ELECTRICAL PROTECTION METHODS

Inspect portable tools and extension cords:

- Workers need to inspect extension cords prior to their use for any cuts or abrasion.
- Electric hand tools that are old, damaged, or misused may have damaged insulation inside.

ELECTRICAL PROTECTION METHODS

Follow lockout/tagout (LOTO) procedures:

- Lockout/tagout
 - Essential safety procedure
 - Protects workers from injury while working on or near electrical circuits and equipment
 - Prevents contact with operating equipment parts such as, blades, gears, shafts, etc.





ELECTRICAL PROTECTION METHODS

- LOTO prevents the unexpected release of hazardous gases, fluids, or solid matter in areas where workers are present.

ELECTRICAL PROTECTION METHODS

Power source identification:

- Mark all breakers accordingly for the circuits they protect
- Mark all disconnect means accordingly for the equipment they service
- Identify all voltages with proper labeling



EMPLOYER REQUIREMENTS

Employer requirements to protect workers:



- Ensure overhead power line safety
- Isolate electrical parts
- Supply ground-fault circuit interrupters (GFCI) protection
- Establish and implement an AEGCP
- Ensure power tools are maintained in a safe condition

EMPLOYER REQUIREMENTS

Employer requirements to protect workers:

- Ensure proper guarding
- Provide training
- Enforce LOTO safety related work practices
- Ensure proper use of flexible cords and power strips
- Ensure proper identification of power sources



SO, FOLKS, AS WE END, WE ASK – **WHAT'S WRONG HERE?**



Identify the hazards in these photos



Your Animation Story Starts Here

Press the button. Make the call. Transform your trainings.

Communication & learning for reliable occupational safety and health by ASK - EHS

ASK-EHS Engineering & Consultants Pvt. Ltd.

<https://www.ask-ehs.com/animation/animated-safety-videos.htm>