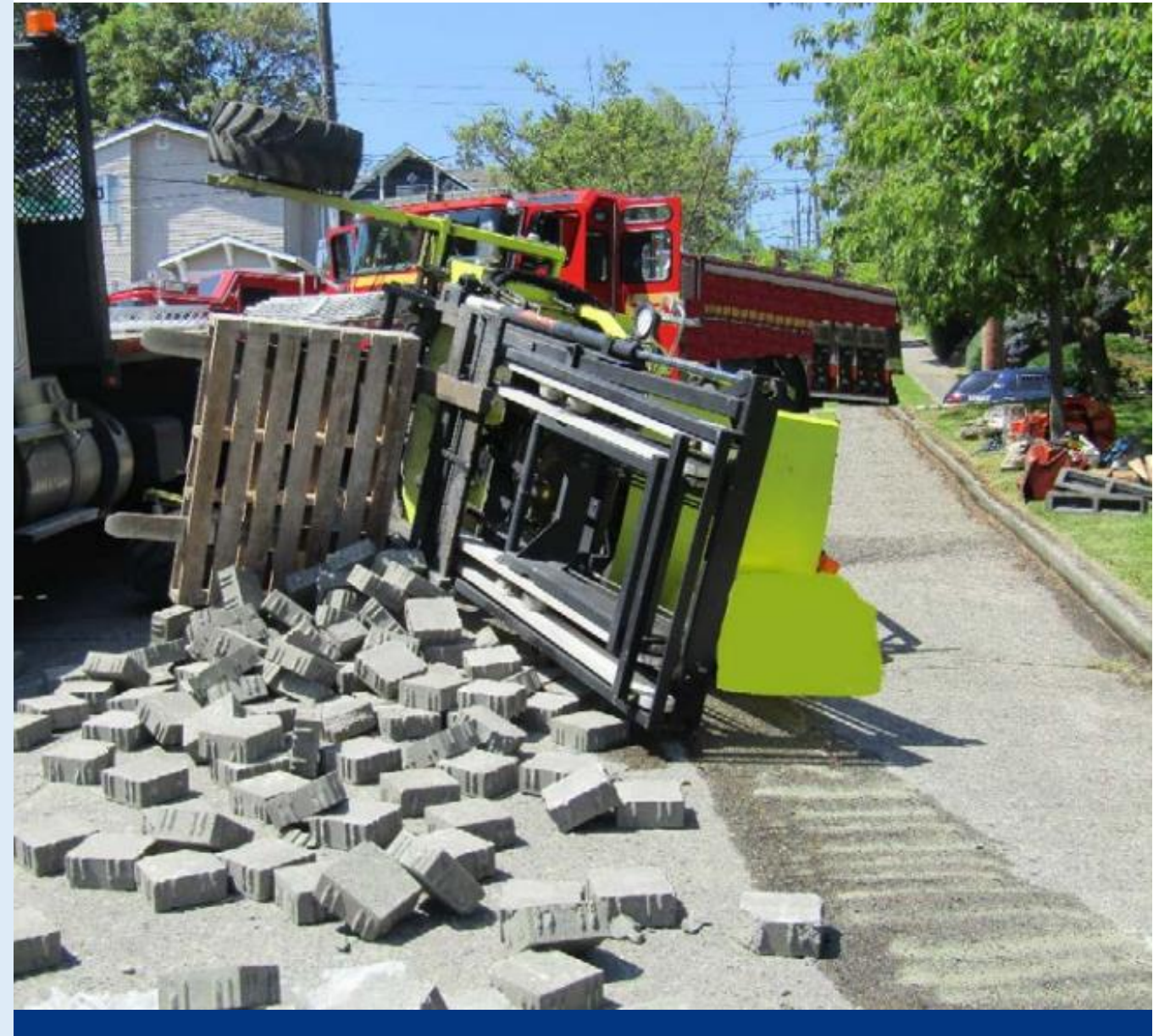


UNDERSTANDING FORKLIFTS



Forklift Fatality

- On July 24, a 19-year-old laborer with 8 days mining experience was injured at a crushed stone operation.
- The victim was operating a skid steer loader to clean spillage around the plant.
- He was found caught between the tilt cylinder assembly and the top front of the operator's cab.
- The victim was flown to a hospital where he died on August 6, 2004.





Some interesting facts..

- Forklift is generally more difficult than driving a car.
- Forklifts are less stable due to the 3 points of suspension versus an automobile's 4 point suspension.
- The back wheels do the turning as opposed to an automobile's front wheels.

Some interesting facts..

- Steering requires greater judgement and operating skills.
- Traffic patterns are not as uniform and predictable when driving a forklift as when driving an automobile.
- A fully loaded forklift can weigh hundreds or even thousands of pounds more than an automobile.





Watching out for 'Hazards'

- Potholes
- Pedestrian Traffic
- Narrow Aisle Ways
- Overhead Obstructions
- Wet, Oily, or Rough Surfaces
- Other Equipment in the Area

Perils in your work environment

- As a forklift operator, one should NOT block electrical panels, fire exits, emergency stop buttons, or aisle ways with materials.
- Know the chemical characteristics of the substances you are moving. Are they stable, reactive or flammable?





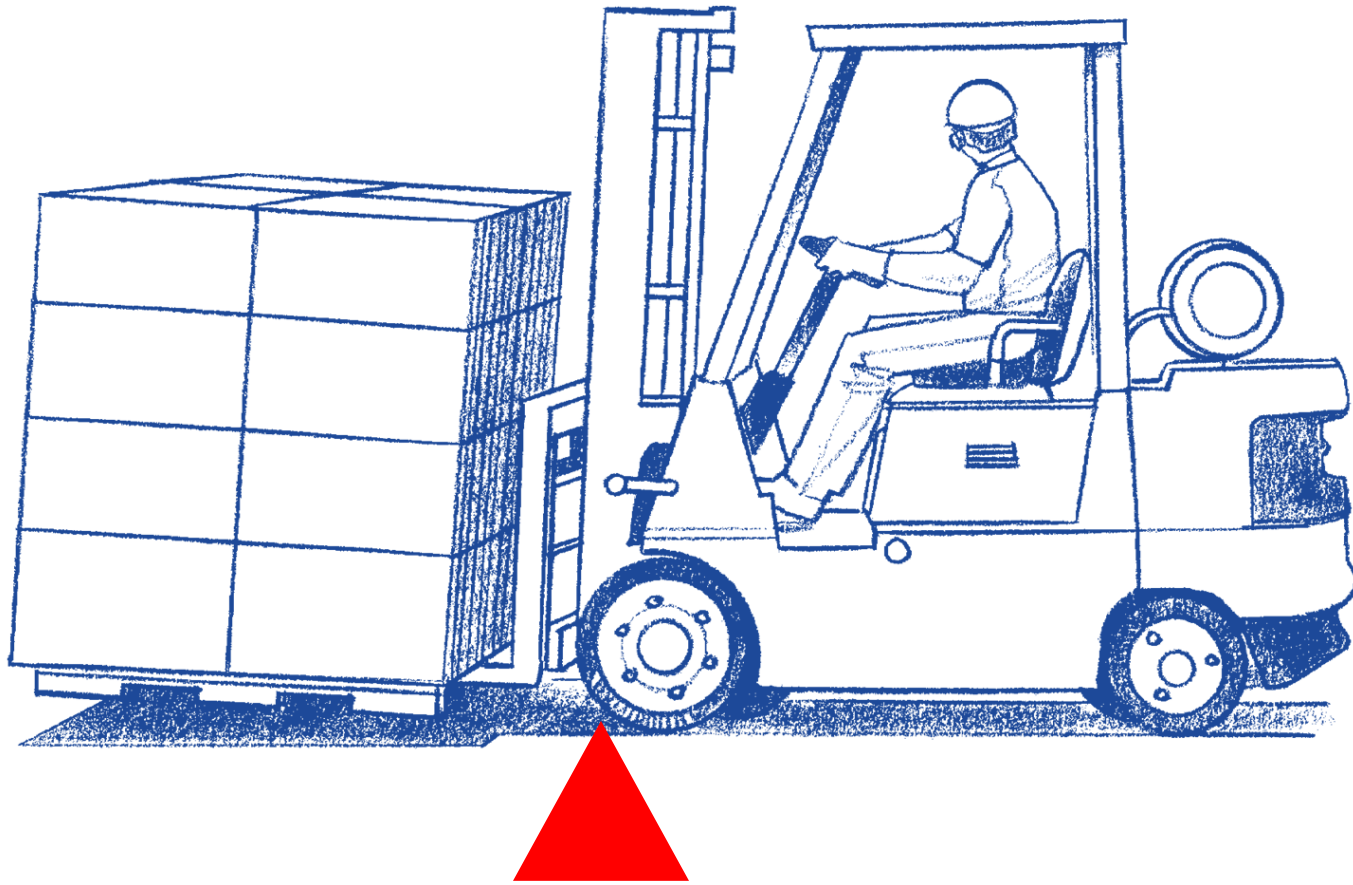
Perils in your work environment

- You should also be aware of potential atmospheric hazards in your environment.
- E.g. Carbon monoxide from a forklift's internal combustion engine can be very hazardous in enclosed or non-ventilated spaces.

Maintaining Stability

- One of the most important facts you need to know about your forklift is how much it can safely lift.
- This weight is listed as the **Load Capacity** on the manufacture's data plate.





Maintaining Stability

- On a forklift, the fulcrum is the front wheels.
- The closer the load is moved to the fulcrum, the more the forklift can lift.
- This is why you should use caution when lifting unbalanced loads.

Train for 'Safe' Driving Skills

- Forklift operators often work in an environment with no clear traffic patterns.
- That's why it is important that you follow safe driving skills when operating a forklift.





Train for 'Safe' Driving Skills

- BE aware of pedestrians and communicate your intentions
- SOUND your horn whenever your vision is blocked
- GIVE pedestrians the right-of-way
- NEVER assume a pedestrian has heard your horn

WHEN TO OPT for Evaluation and Refresher Training for FORKLIFTS?



- The operator has operated the vehicle in an unsafe manner.
- The operator was involved in an accident or near-miss .
- The operator has received an evaluation revealing that the operator is not operating the truck safely.
- The operator is assigned to drive a different type of truck.
- A condition in the workplace changes in a manner that could affect safe operation of the truck.

Your Animation Story Starts Here

Press the button. Make the call. Transform your trainings.

Communication & learning for reliable occupational safety and health by ASK - EHS

ASK-EHS Engineering & Consultants

<https://www.ask-ehs.com/animation/animated-safety-videos.htm>