

PTW Software

An Ultimate Safety Solution

PTW Advantages for the Automotive Industry



The Automotive Industry Safety Challenges

The production and manufacturing of the automotive industry has massive plants size for its regular operations. Therefore, the challenges faced by the industry are unique. Some of them are;

- Trips, falls, slips
- Physical and mental stress
- Machine injury or injuries due to moving mechanical parts (ex. Forklift operations)
- Safety management of the large plant
- Operationally complexities

What Is Industry Specific PTW Software?

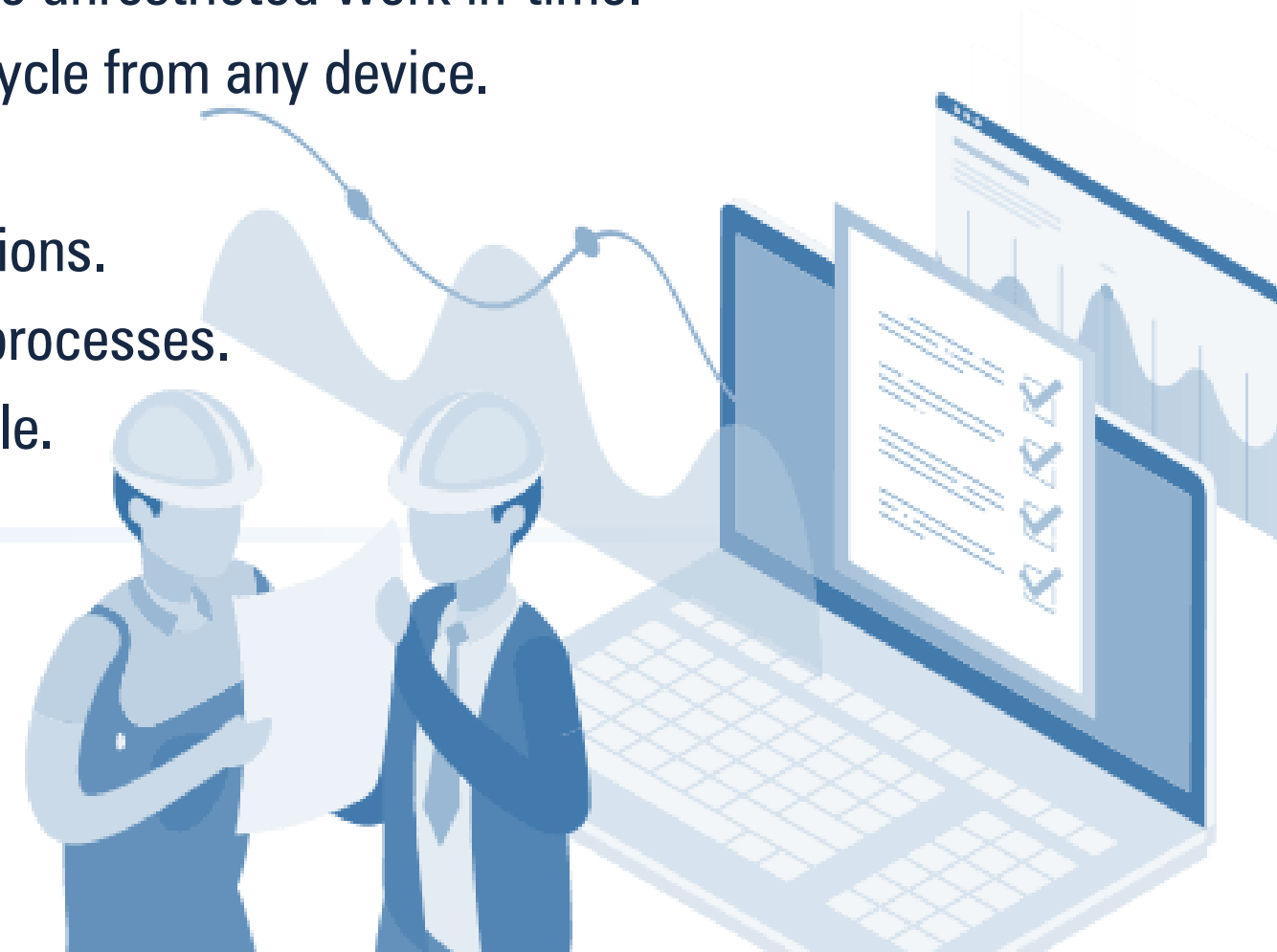
Permit to work software is an end-to-end solution that syncs operational, maintenance, scheduled and unscheduled works in organizations.

- Increases operational efficiency, productivity and address maintenance and works' domain.
- Is customized according to regulatory authorities and safety management systems' complete lists of activities requiring PTWs.
- Meets every industry's demands systematic processes to identify, communicate, and mitigate in hazardous areas and nonstandard situations to prevent accidents.
- Is critically essential to ensure worker safety in every working conditions.



Why ePTW?

- Complete and flexible access of the enormous workplace.
- Streamlined processes and reliable maintenance works.
- Easy to adopt and administer.
- Preconfigured floor maps along with permit requests ensure unrestricted work in-time.
- Process can be visualized by the stakeholders in PTW lifecycle from any device.
- Synchronized documented SOPs and lists of hazards.
- Auto-generates the relevant forms, checklists and permissions.
- Accelerated response time and improved communication processes.
- A 360 degree qualitative and safety compliant PTW lifecycle.

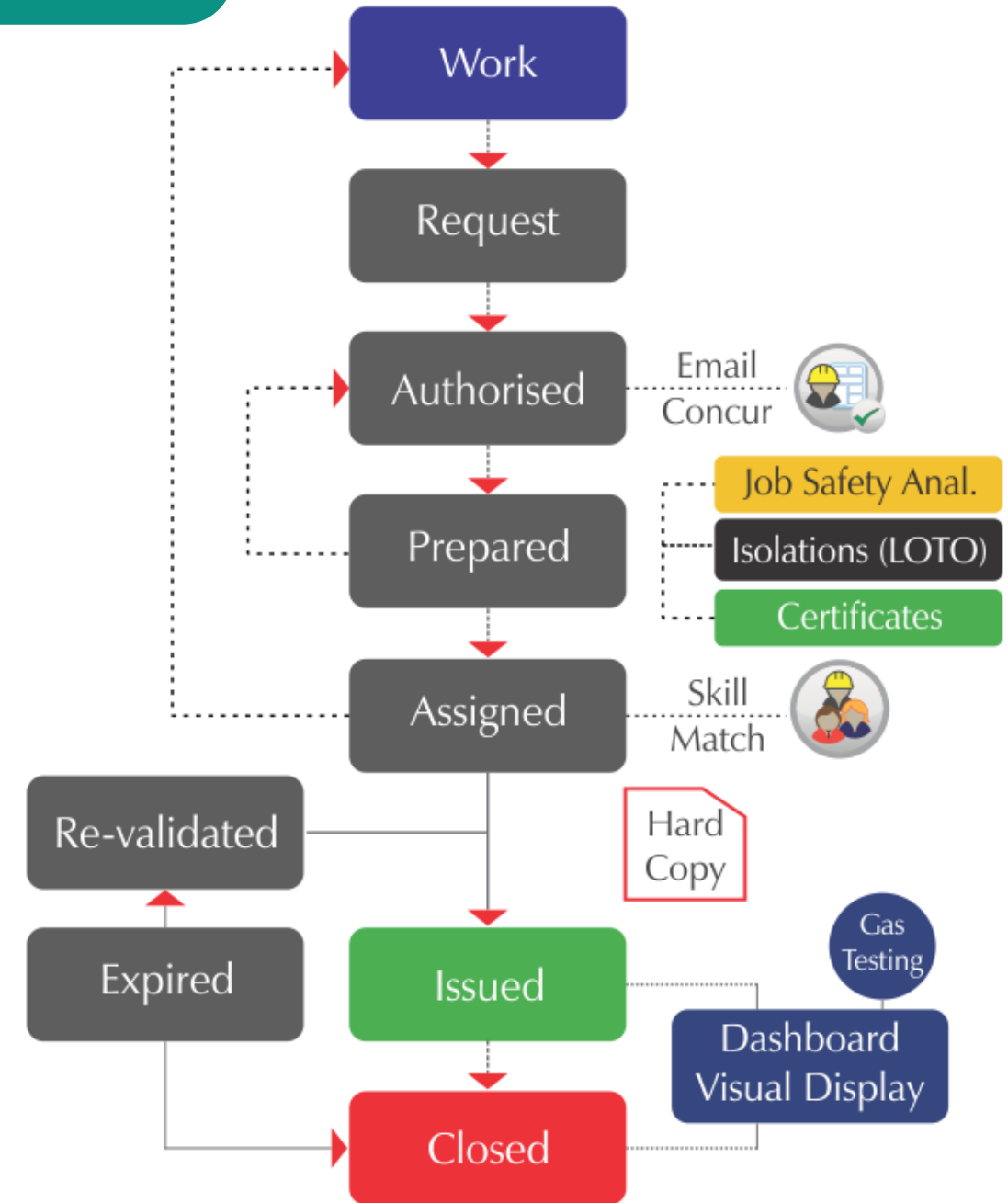


Critical Processes of PTW Software

The PTW software facilitates correct work sequences among established parties with a single window view enhancing by detailed area maps for visibility.

The Life Cycle of a Permit To Work includes:

1. Permit requirement arises (identification)
2. Request, raise and issue work permits (add certificates & risk assessments)
3. Authorize and Prepare work site
4. Undertake and execute site preparation protocols
5. Permit issued, work commences and monitored
6. Associated meetings – tool-box talks, shift re-validation etc.
7. Close permit and archive



Talk to the Experts

Highly stratified and diverse set of operations in automobiles and automotive manufacturing require cross-functional teams spread over different shop floors. Execution of permit to work needs visibility, singular platform and a hierarchy based flow of authorization

Inspired by the principles of Lean manufacturing, a permit to work software stands to offer all of these features with

- Better reporting
- Notifications
- Proactive escalation of requested permits



Connect with us today!

email:- info@ask-ehs.com

Ph.:- +91 89800 10420



ASK-EHS Engineering & Consultants