

# Streamline Contractor Lifecycle

Ways to Streamline Processes in the  
Renewable Sector through CMS Software



# CMS Challenges for Renewable Sector



- No real-time visibility
- Heavy vehicle maintenance
- Equipment in and out details
- Remote locations
- Update training processes
- Safety concerns
- Regulatory hurdles
- Human errors

# And Also...

## Did You Know..

Sometimes contractors outnumber the actual number of in house employees?

Renewable energy projects can be affected by the weather, leading to fluctuations in contractor service demand?

The renewable energy sector is known for operating in areas with limited infrastructure or countries with restrictive trade policies?

Renewable energy projects are capital-intensive?

Contractors and their workers must be appropriately trained and specially equipped to manage renewable sector risks?

**AND EFFECTIVELY MANAGING ALL OF THE ABOVE CAN BE QUITE DAUNTING?**

# CMS Software To The Rescue



Contractor Management Software (CMS) proactively manages site-risks and demands a complete cycle approach.



It eliminates siloed approaches toward asset management.



It provides complete and digital control of contractor-vendor-supplier operations.



It ensures error-free data capture, recording, maintenance and planning.



It easily tracks asset permissions and authorizations.

# One Solution For All Contractor Management Challenges

A CMS software not only performs the tasks listed in the previous slide but also;



Is a web portal for registration for workers, vehicles and equipment.



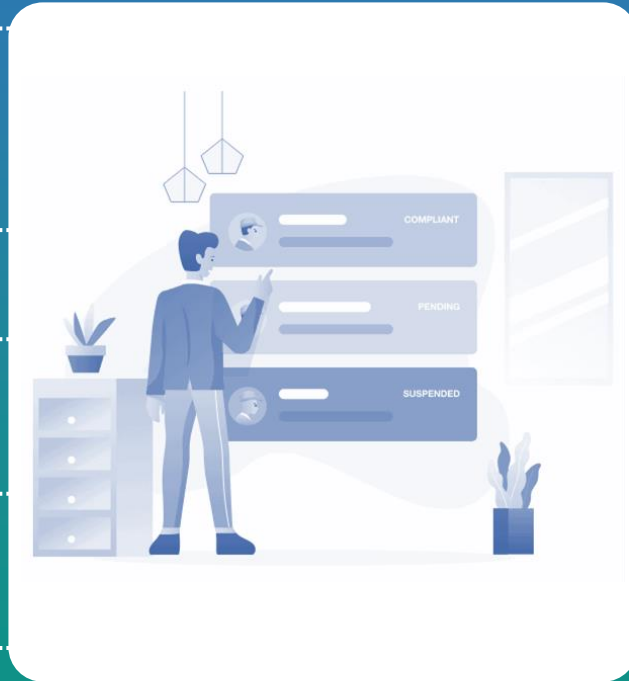
Prints authorized ID badges.



Scans documents for future reference.



Enables a policy-based workflow approval.



Generates forms and other requirements for asset maintenance and inspections.



Tracks contractor compliances and regulations.



Records and stores the training received by the contractors.



# It's Not Just For You!

A CMS software works seamlessly for both the organization and the contractors. It eliminates the need for you to micromanage & does the job for you.

The renewable energy sector faces new and unknown challenges regularly; therefore, it must use a digital approach to streamline contractor management, as they are the ones who greatly help eliminate the obstacles.

So, external or internal, let contractors work to the best of their capabilities without you sweating your brows about their performance.

**Connect with us today!**

email:- [info@ask-ehs.com](mailto:info@ask-ehs.com)

Ph.:- +91 89800 10420



ASK-EHS Engineering & Consultants